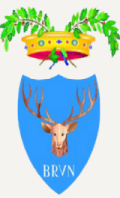
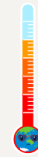


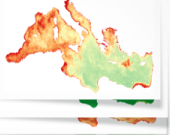
IDENTIFYING SPATIAL OPPORTUNITIES FOR MARINE AND COASTAL NATURE-BASED SOLUTIONS

29TH - 30TH SEPTEMBER 2022
LECCE, PUGLIA - ITALY



MODEL PREDICTORS
Multiple threats/pressures affecting the Mediterranean Sea

RANDOM FOREST DESIGN/APPLICATION

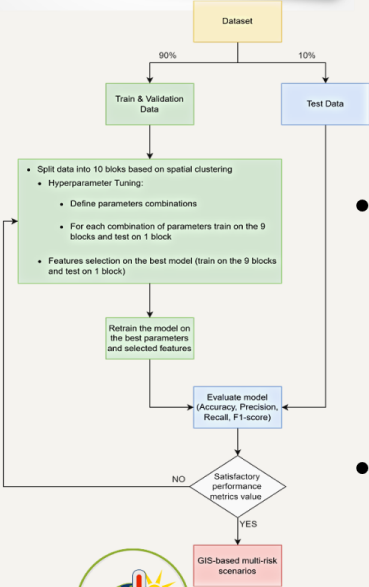
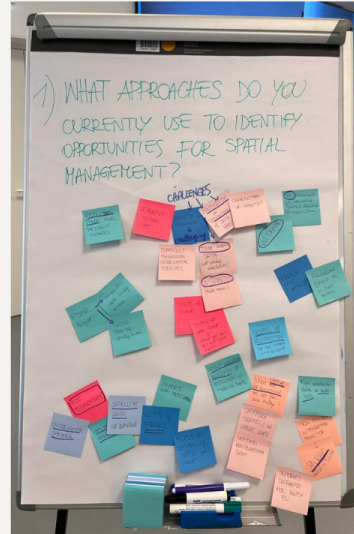


MODEL RESPONSES
Marine-Coastal Ecosystem condition



Risk assessment framework

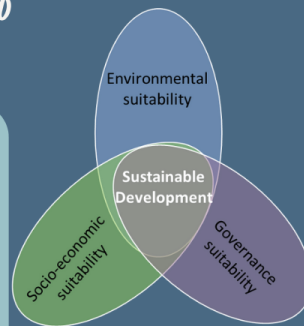
- The risk assessment model developed by CMCC focuses on seagrass across the whole Mediterranean Sea.
- The model is **data-driven** -> it can predict both positive and negative effects and will therefore foresee both areas of growth and contraction/shrinkage
- Additional variables suggested by participants that could be considered, include: a) present-day and future land use, b) anchoring, small-scale fisheries activities, c) spatial regulations, MPAs.
- Availability of data is key** when deciding what can, and should, be modelled.



Identifying opportunities for types of NBS

SUITABILITY MAPPING AND OPTIONS FOR MANAGEMENT

Identifying and reducing direct pressures, setting up compensation actions (biodiversity offsetting), and leveraging financial opportunities are key for advancing NBS implementation

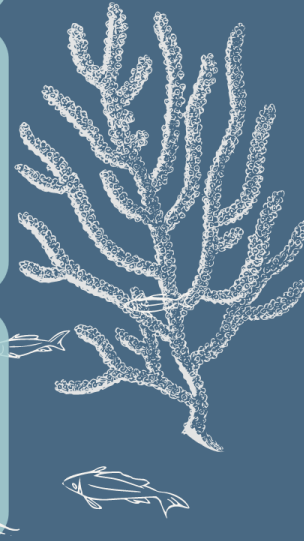
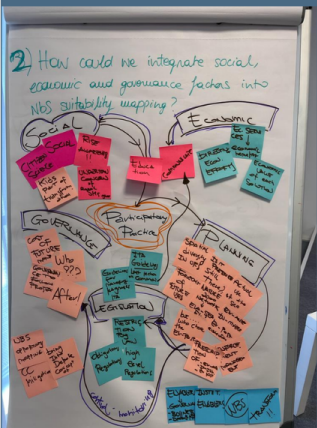


INTEGRATING SOCIAL, ECONOMIC AND GOVERNANCE FACTORS INTO NBS SUITABILITY MAPPING

When considering NBS suitability, it is important to define future use of an area, involve citizens, and set up enabling conditions to foster NBS implementation

SOCIAL, ECONOMIC AND GOVERNANCE FACTORS TO CONSIDER

Activities, uses, spatial restrictions, municipality boundaries, coastguard areas of responsibilities, other jurisdictional boundaries



ITALIAN CASE STUDY

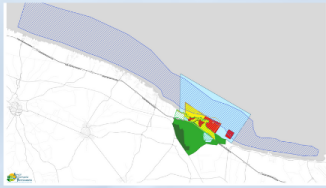
MARINE PROTECTED AREA OF TORRE GUACETO

Field Visit

Stakeholder engagement

Torre Guaceto protected area

The zones



Engagement pathway

Local stakeholder's involvement and participation -> direct dialogue and joined activities



Torre Guaceto protected area

The area includes:

- Marine Reserve: sustainable fishing;
- Terrestrial Reserve;
- Local products: wines, Oro del Parco extra virgin olive oil, Fiaschetto tomatoes;
- Recreational activities.

Share knowledge, vision and data

What are the 3 words that come in your mind when you think of climate change adaptation?

consapevolezza
 qualità della vita
 erosione costiera
 eventi estremi
 resilienza
 tropicalizzazione
 catena alimentare
 destagionalizzazione
 cultura ambientale
 ondate di calore
 trasformazione



Turtle rescue centre

The activities include research, conservation, information and raising public awareness on the protection of marine wildlife and turtles.

Future collaborations

- Online meetings to discuss available datasets;
- 2 workshops to design and test a model with local stakeholders, considering their perspectives and management needs.

